

How to Check for Leaks

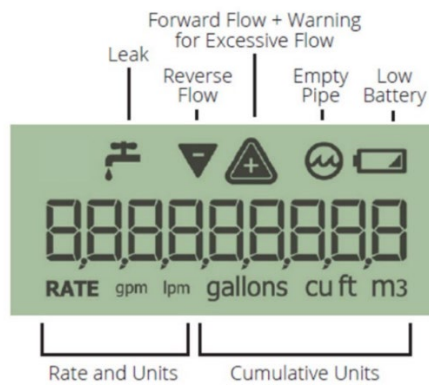
The best way to determine if you have a leak in your plumbing system, is by first **checking your water meter**. The water meter should be located near the curb or sidewalk at the front of the property in a concrete "box."

Fixing leaks will not only lower your water bill but will also help preserve our limited precious water resources for future generations.



analog meter

MACH 10 Icons and Displays



digital meter

Checking Your Water Meter

1. **Make sure no water is being used** inside or outside of your house.
2. Locate your water meter and **check the leak indicator** to see if it is moving. On an analog meter, the leak indicator could be a small triangular dial or a small silver wheel that rotates when water is flowing through the meter. **If the dial is moving, chances are, you have a leak.** On a digital meter, shine a light on the display to wake it up; the leak indicator is a **dripping faucet icon**.
3. Or you can also take a meter reading and wait 1 or 2 hours and take another meter reading (make sure no water is used during this time). If the reading has changed, you have a leak.

Is Your Leak Inside or Outside?

After you have determined that you have a leak, the next step is to determine if the leak is inside or outside your house.

1. **Locate the main shut off valve for the house** and shut off the water at the valve. Typically, you will find the shut off valve in the garage directly behind an outdoor faucet, or outside below an outdoor faucet.
2. Again, **check the leak indicator** for movement or use the meter reading method, making sure not to use any water during this period. If the leak indicator stops moving or there is no change in the meter readings, you have a leak inside of the house. If the leak indicator continues to move or there is a change in the meter readings, the leak is outside between the meter and the house.
3. **If you have a leak and cannot locate the source, please call a plumber as soon as possible.**

If you are having trouble reading or understanding your water meter, please call Myoma Water Company at (760) 772-1967 for additional assistance.